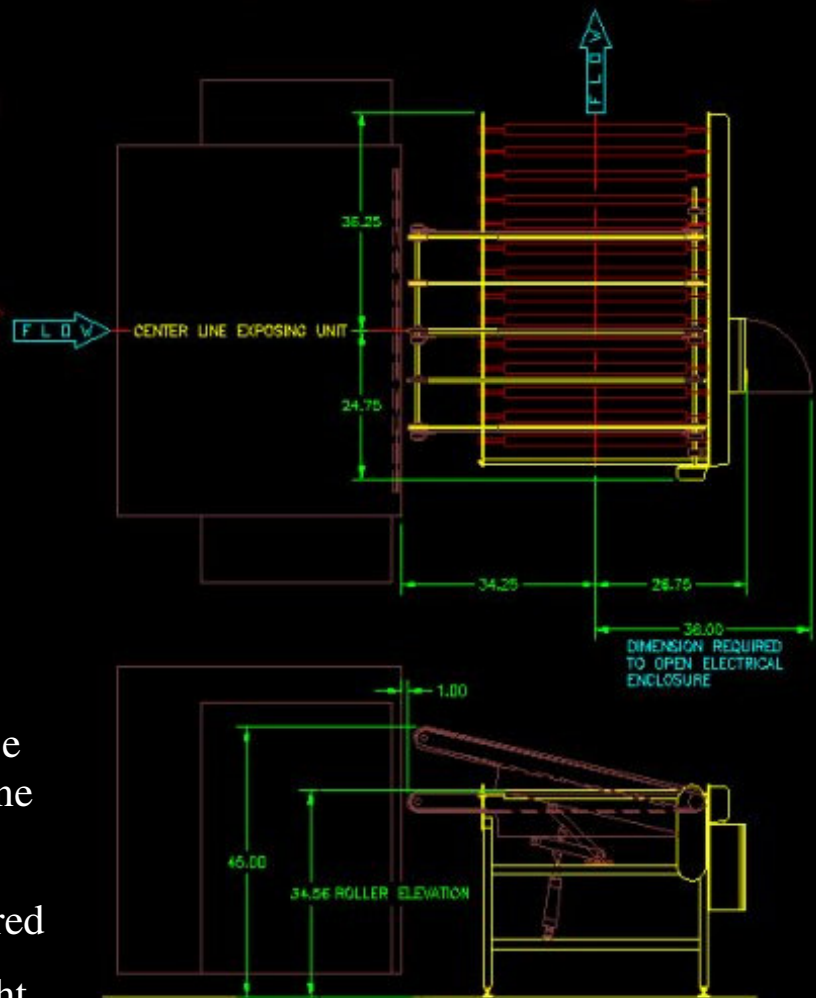




Plate Turner

PT 61 Right Angle Plate Turner

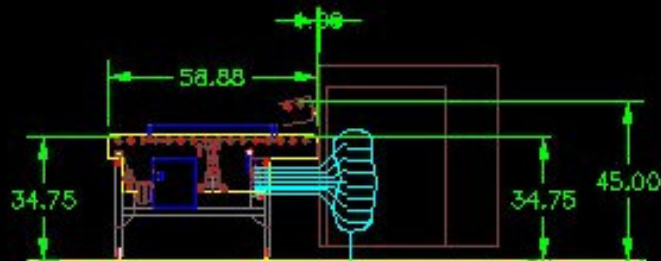
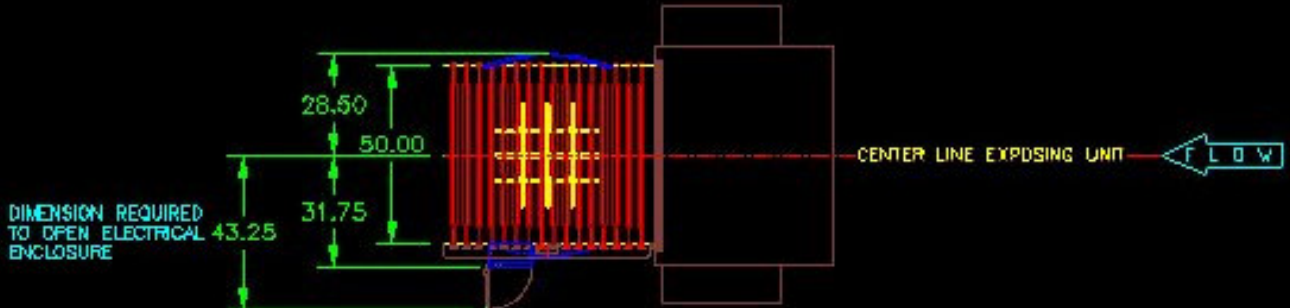


- Variable Speed Plate Tuner Can Be Installed Anywhere In The On-Line System
- Right or Left Angle Can Be Ordered
- Easy Setup With Adjustable Height
- Self Contained Electrical Controls
- Min. Plate: 15"x12"
- Max. Plate: 41"x31.5"
- Min. 3" Height Drop Between



PT 50 In-Line Plate Turner

- Variable Speed In-Line Plate Tuner Can Be Installed Anywhere In The In-Line System
- Incremental Infeed Elevations (37.5" to 45")
- Easy Setup With Adjustable Height
- Self Contained Electrical Controls
- Min. Plate: 15"x12"
- Max. Plate: 41"x31.5"



PRODUCTION CAPABILITIES:
 PLATE SIZE MAX. 41" X 31.5" ... MIN. 15" X 12"
 18 PLATES PER HOUR

UTILITY REQUIREMENTS:
 115 VAC 5 AMPS
 60 P.S.I. CLEAN DRY COMPRESSED AIR

INCREMENTAL INFEEED ELEVATIONS
 POSITION "A" = 34.75
 POSITION "B" = 36.50
 POSITION "C" = 38.19
 POSITION "D" = 39.88
 POSITION "E" = 41.50
 POSITION "F" = 43.19
 POSITION "G" = 45.00